



60, Landmann Point, 6 Peartree Way, Greenwich Millennium Village, London, SE10 0GW
£1,850 Per month



60, Landmann Point, 6 Peartree Way, Greenwich Millennium Village, London,
SE10 0CW
£1,850 Per month

Welcome to this charming flat located in Greenwich Millennium Village in the vibrant area of Greenwich, London. This delightful property offers a perfect blend of comfort and convenience, making it an ideal choice for individuals or couples seeking a stylish urban retreat.

Spanning an impressive 570 square feet, this flat features a well-appointed reception room that provides a warm and inviting space for relaxation or entertaining guests. The bedroom is thoughtfully designed to ensure a peaceful night's sleep, while the bathroom is modern and functional, catering to all your daily needs.

Situated in the heart of North Greenwich, this property benefits from excellent transport links, allowing for easy access to central London and beyond. Nearby Greenwich is rich in history and culture, with an array of shops, restaurants, and parks nearby, perfect for leisurely strolls or enjoying a meal out.

This flat presents a wonderful opportunity for those looking to embrace the lively lifestyle that Greenwich has to offer. With its appealing layout and prime location, it is sure to attract interest from a variety of potential renters. Do not miss the chance to make this lovely flat your new homes.

Available 1st July and offered furnished.

Description

With 1 bedroom, an open plan kitchen and living room, 1 bathroom and is situated on the 7th floor.

Offered furnished and ready to move into.
Available 1st July.

Situated within walking distance to North Greenwich Jubilee line station and all of the bars, restaurants and cinema at the O2.

On the 7th floor of the development with views of the skyline nearby. with a beautiful covered winter garden.

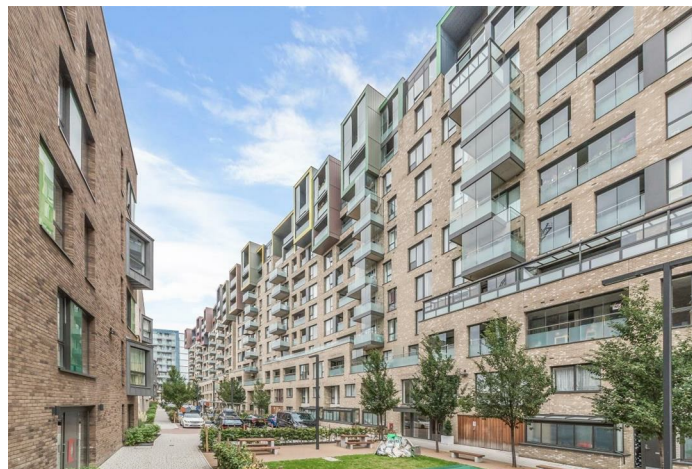
Situation

Located in North Greenwich, is this stunning and modern one bedroom, one bathroom apartment in the Greenwich Millennium Village development in SE10.

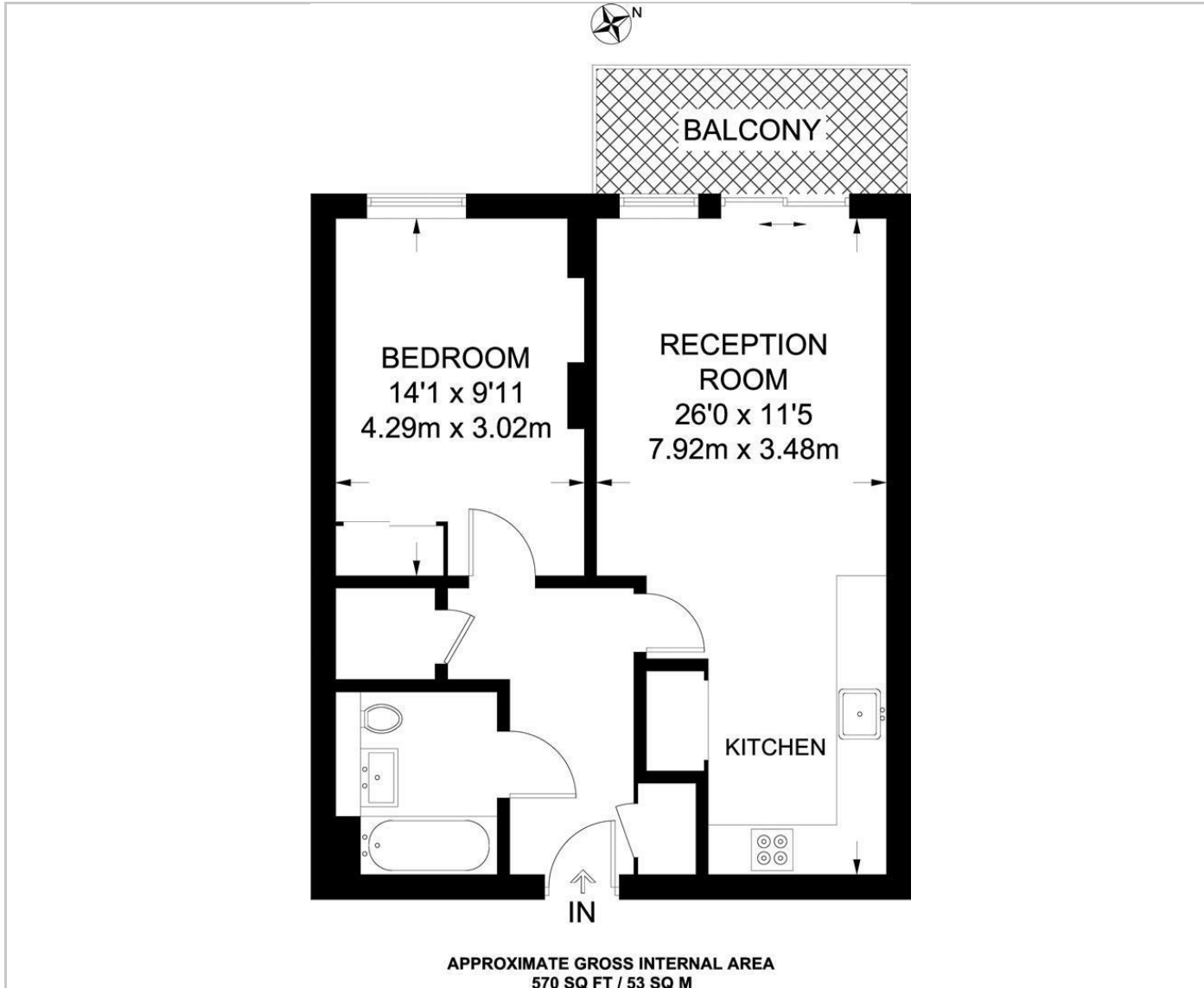
Furnished

Council Tax Band: C

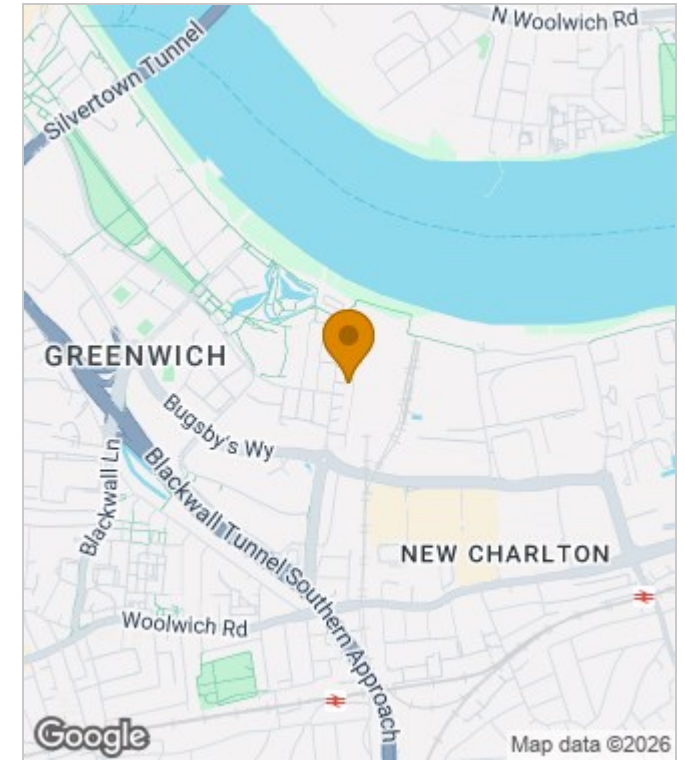
Available: 1st July 2026



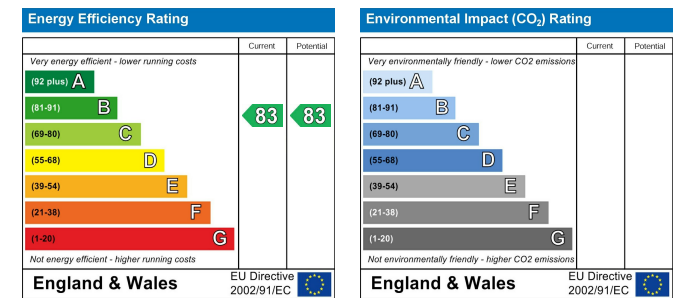
Floor Plans



Area Map



Energy Performance Graph



These particulars, whilst believed to be accurate are set out as a general outline only for guidance and do not constitute any part of an offer or contract. Intending purchasers should not rely on them as statements of representation of fact, but must satisfy themselves by inspection or otherwise as to their accuracy. No person in this firm's employment has the authority to make or give any representation or warranty in respect of the property.

The Nucleus Brunel Way, Dartford, Kent, DA1 5GA

Tel: 02081758868 Email: property@lyhpropertyconsultants.com www.lyhpropertyconsultants.com